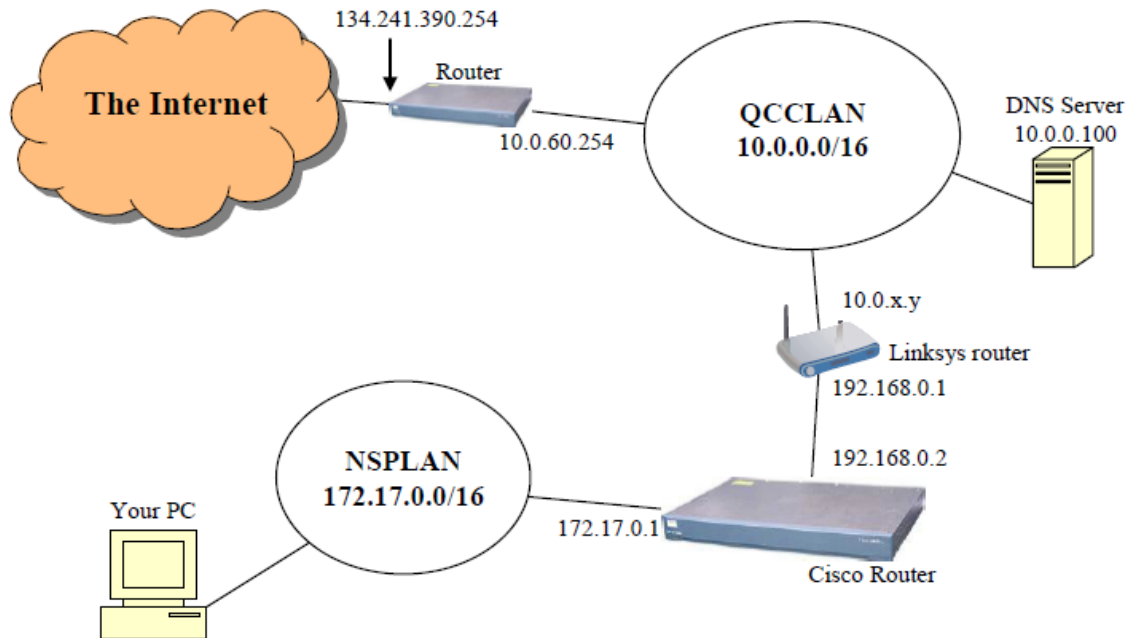
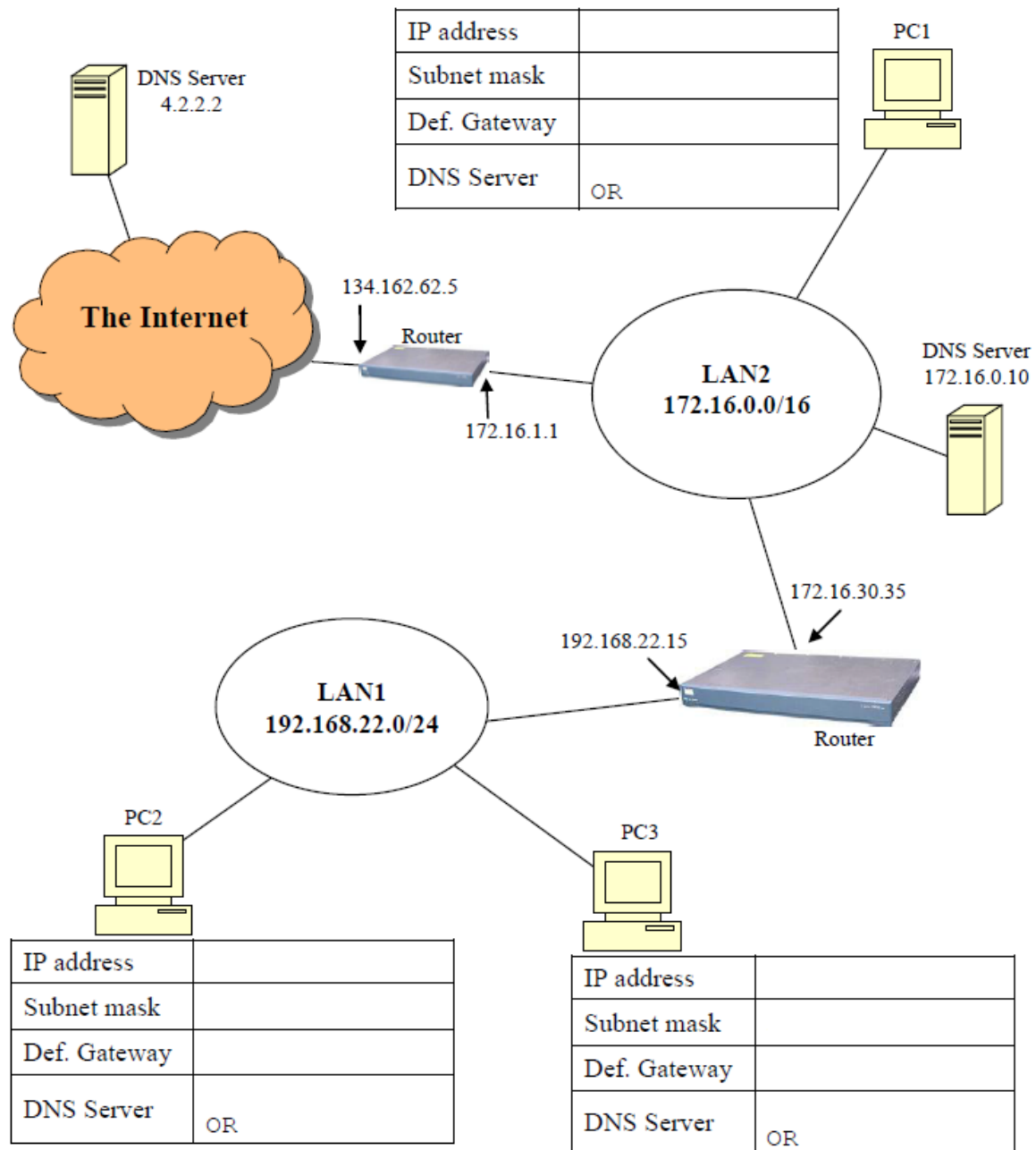


Part 1: Assign an IP address, subnet mask, default gateway and DNS server address to Your PC in the following network:

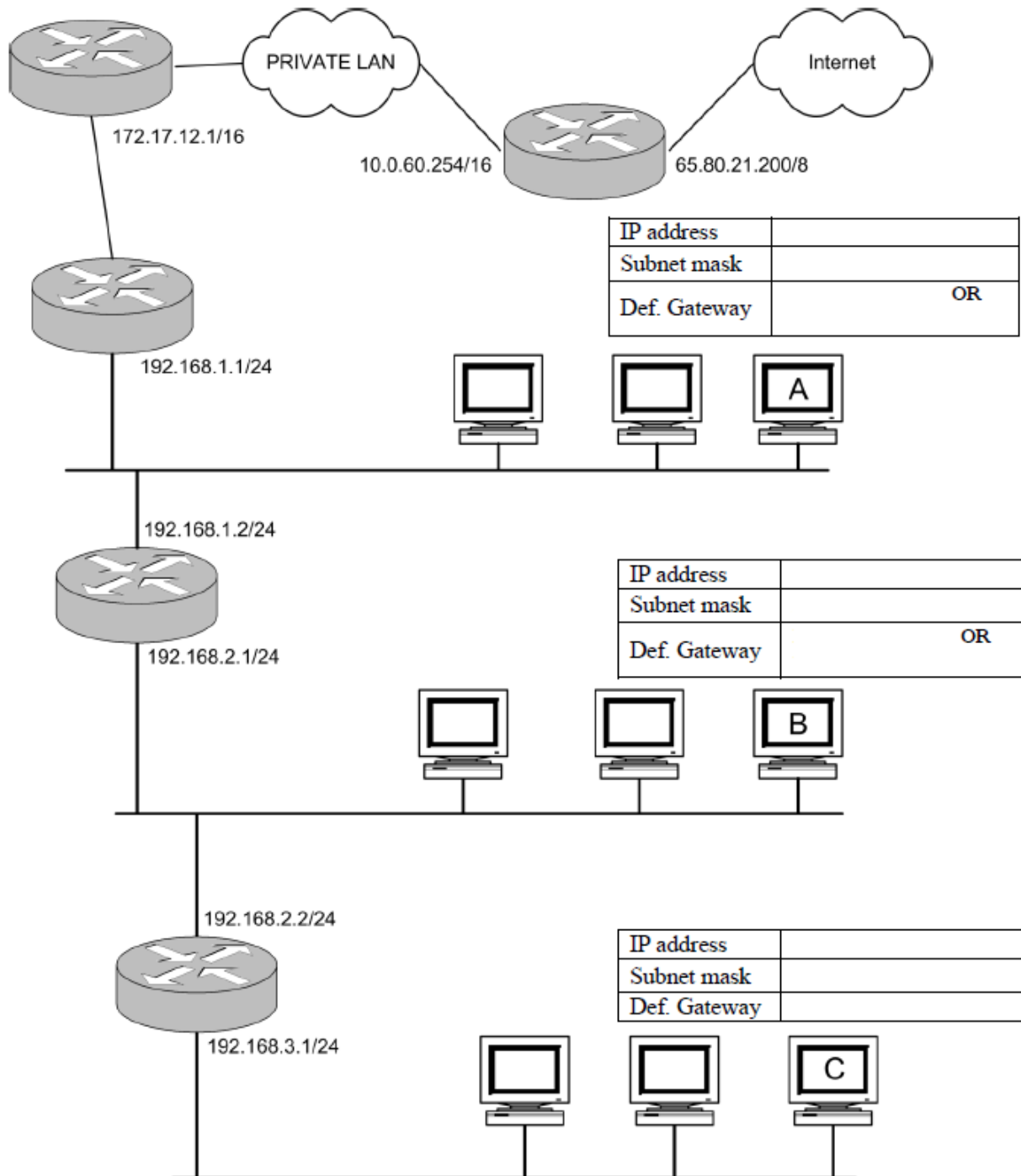


IP address	
Subnet mask	
Def. Gateway	
DNS Server	

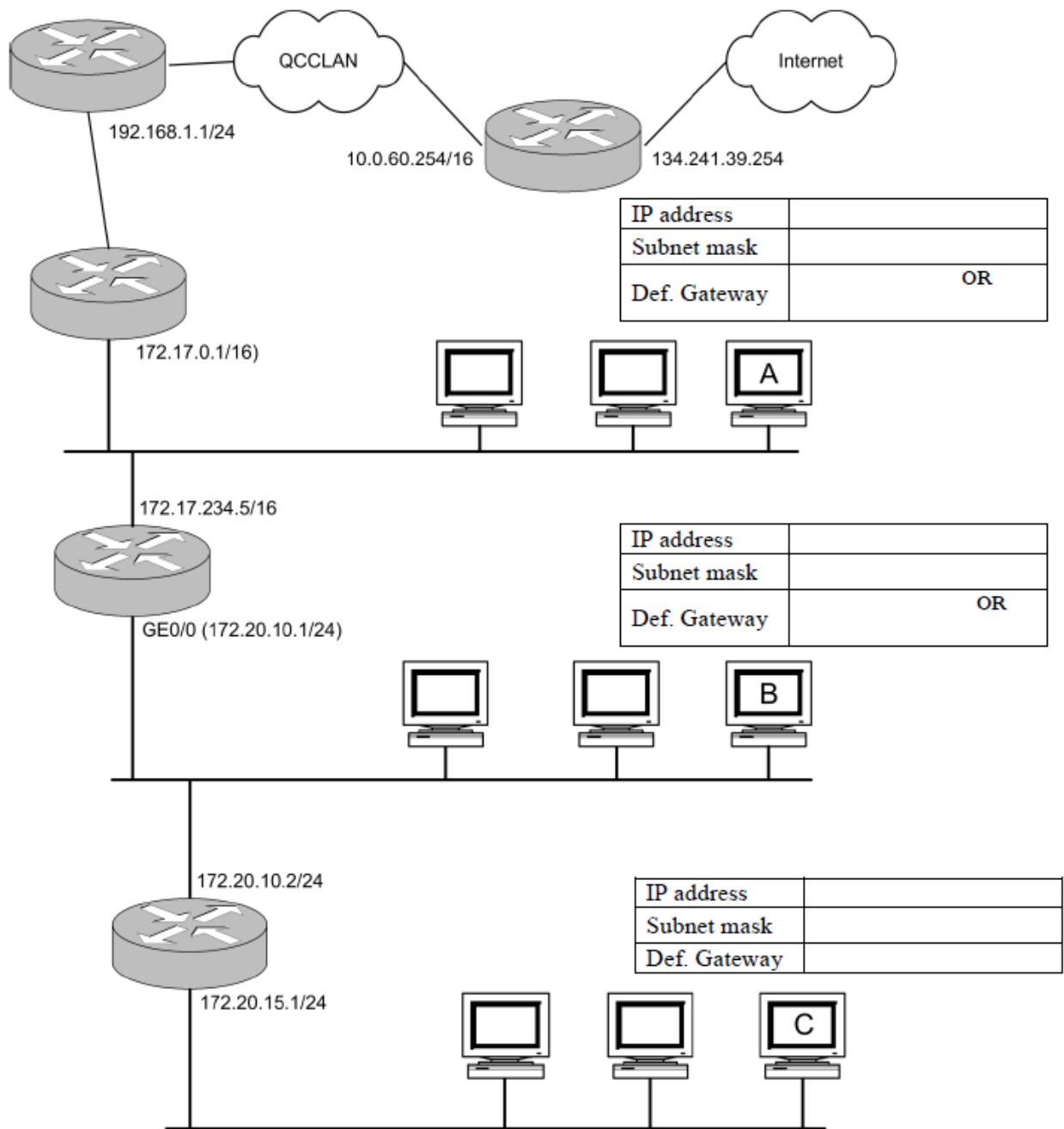
Part 2: Assign a valid IP address, SM, DG, and DNS server address to PC1, PC2, and PC3 in the following network:



Part 3: For each of the computers A, B, and C, assign an IP address, a subnet mask, and a default gateway.



Part 4: For each of the computers A, B, and C, assign an IP address, a subnet mask, and a default gateway.



Part 5: For each of the computers A, B, C, D, and E assign an IP address, a subnet mask, and a default gateway.

